

# CONNECTOR MANUFACTURERS

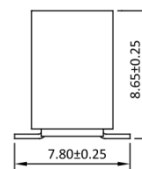
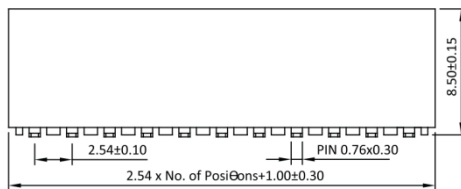
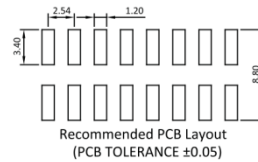
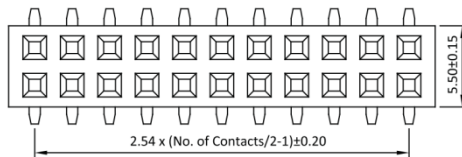
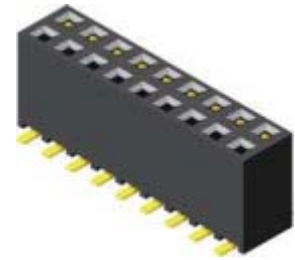
**TOPTEK®**  
HARDWARE ELECTRONIC MANUFACTURER

 www.toptek-co.com

Female Header 2.54mm 2 Row H=8.5mm Triple Contact SMT Type

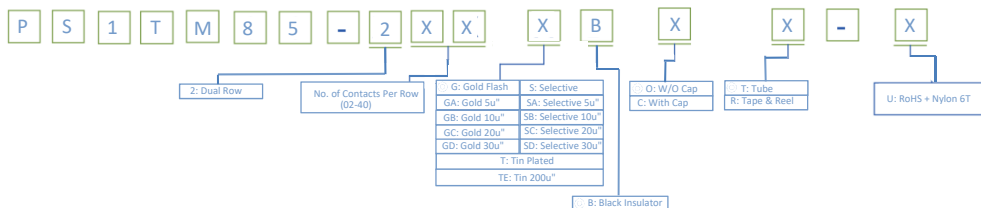
**Specifications**  
 Current Rate:3 AMP  
 Insulation Resistance:1000MΩ Min.  
 Contact Resistance:20mΩ Max.  
 Dielectric Voltage:1000V AC for one minute  
 Operation Temperature:-40°C to +105°C

**Material**  
 Insulator:Hi-Temp. Thermoplastic, UL 94V-0  
 Terminal:Copper Alloy  
 Plating:Gold Plated



Part No.:PS1TM85-2XX-U

## ORDER INFORMATION



©:Standard Recommend



ROHS